

# Toxic City



**2700**  
children had lead poisoning in Philadelphia 2015



**500**  
children received treatment



**121**  
cases brought to court

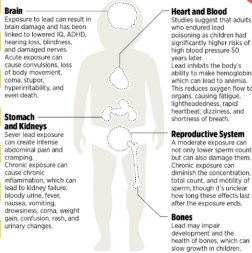
Lead paints were banned in 1978, however, 92% of Philadelphia homes still use lead paints.

These paints deteriorate quickly leaving behind paint chips that taste like candy.

There have been numerous reports of children eating the chips off the walls causing lead poisoning.



## How Lead Affects a Child's Body

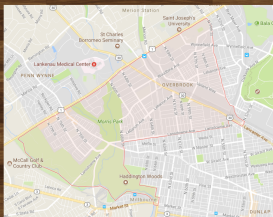
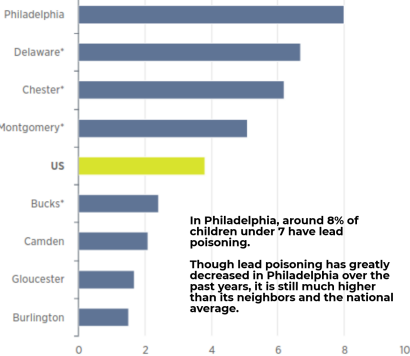


Lead poisoning can permanently weaken a child's ability to socialize and learn.

A child is considered to have lead poisoning when their blood level is over 5 micrograms per deciliter.

However, most agencies only help a child once they are pass lead poisoning level 10.

A  
B  
C



For example, 10 to 11% of children below 7 in Overbrook have lead poisoning.

11 to 28% of these people are in poverty and 72 to 100% of these homes were built before the lead paint ban in 1980, giving Overbrook a lead risk score of 6 - 8 with 1 being unlikely and 10 being likely.



## Conclusion



This photo was taken by Gregory Jackson in December 2015 when workers hired by the landlord burned lead paint with a blowtorch and splashed the walls with turpentine prior to sanding and scraping the lead paint.

Lead poisoning harms everyone; however, it harms children most.

It is a very important environmental justice issue because lead paint destroys the environment children grow up in, harming them in the process.

Finally, it is important that people get rid of all of the lead paint in their homes.

This can be done by scratching or burning the paint off and repainting.



## Notes

Laker, Barbara, et al. "Philly ignores thousands of kids poisoned by lead paint." Philly.com, Philly.com, 29 Oct. 2016, [www.philly.com/philly/news/Philadelphia\\_ignores\\_thousands\\_of\\_kids\\_poisoned\\_by\\_lead\\_paint.html](http://www.philly.com/philly/news/Philadelphia_ignores_thousands_of_kids_poisoned_by_lead_paint.html).