



Tsunami's

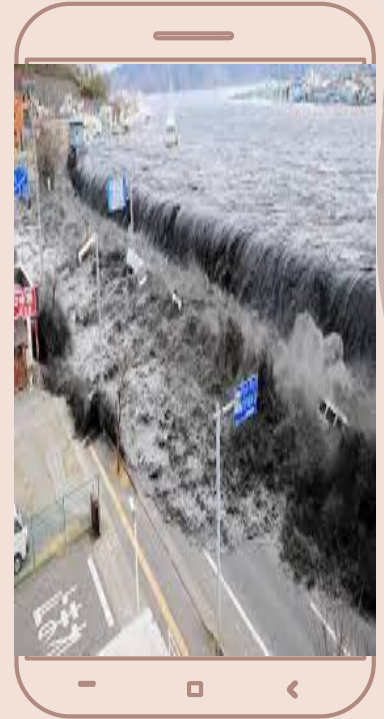
Dillynne, Kaylah, Ty'ona, Milah

Contents of This Template

1. What are tsunami's?/how are they caused?
2. Identify earth systems involved in tsunamis.
3. How are tsunamis affected by the earth systems?
4. What measures can you take to prevent tsunamis

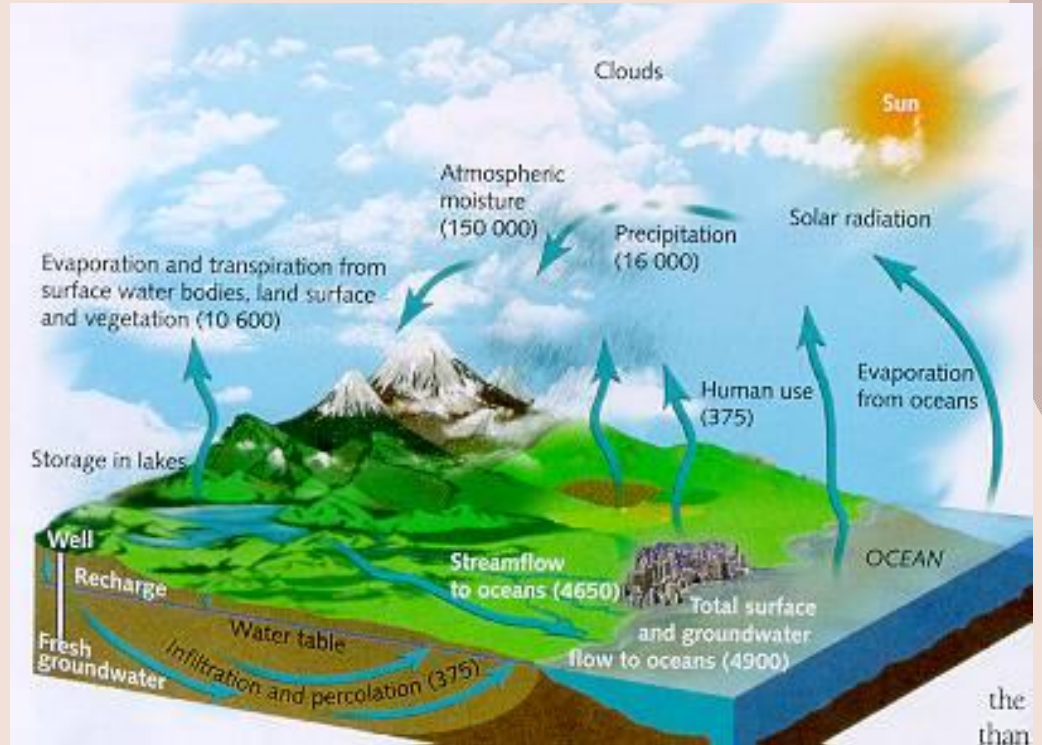
What are Tsunami's?

- A tsunami is a series of waves that is caused by a large and sudden displacement of the ocean floor. They're usually the result of an earthquake.
- Tsunamis are caused by violent seafloor movement associated with earthquakes, landslides, lava entering the sea, seamount collapse, or meteorite impact.
- They occur in the Pacific ocean because the Pacific Rim bordering the ocean has a large number of active submarine earthquake zones.



What Systems are involved in Tsunami's?

- The hydrosphere
- The geosphere
- The biosphere



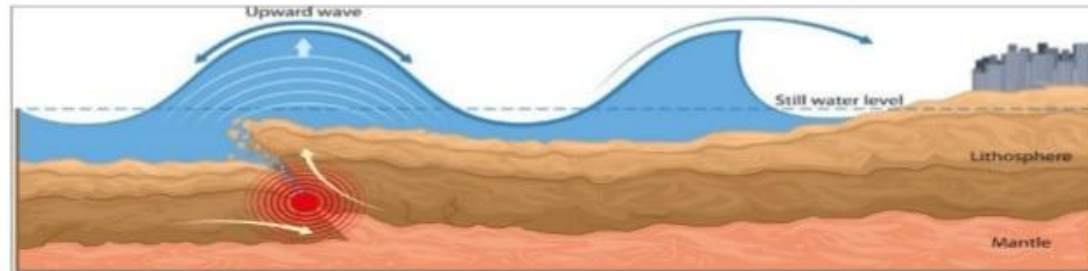
How are tsunamis affected by the earth systems?

Tsunamis are giant waves in the ocean (hydrosphere), triggered by earthquakes (a primary force in the lithosphere), and have deadly consequences on coastal communities (the biosphere).

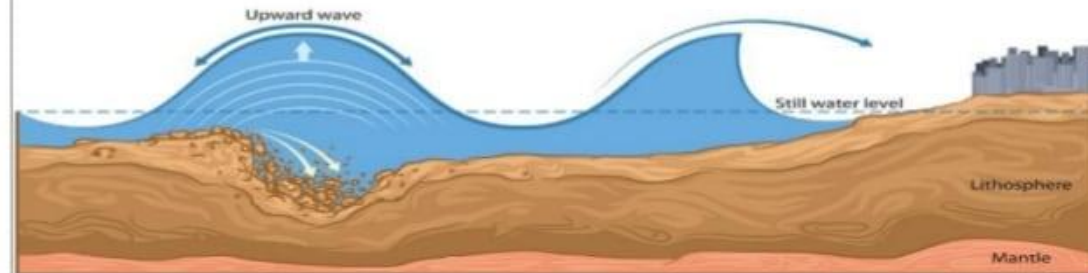
CAUSES OF TSUNAMI

1) Earthquakes

2) Landslides,



Tsunami caused by an earthquake



Tsunami caused by erosion

How are tsunamis affected by the earth systems?

- The hydrosphere is affected by tsunamis because tsunamis are made up of water.
- The geosphere is affected by tsunamis because when a tsunami comes onto land there is a great chance that it ruins a lot of the land and many of the buildings around.
- The biosphere is affected because there is so much water and it has so much force that humans can get caught in it and drown. Trees and any other plants around can also be taken down by the force of a tsunami.