

# TSUNAMI

by Patrick and Gabe

## EARTH SYSTEMS

Earth systems that impact a tsunami

Hydrosphere

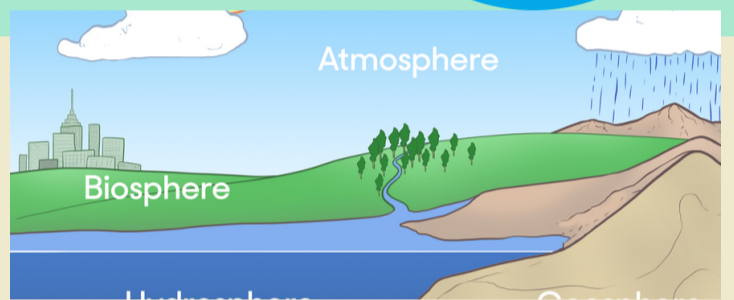
Geosphere

Biosphere

Lithosphere



## TSUNAMIS AFFECT ALL 4 SPHERES



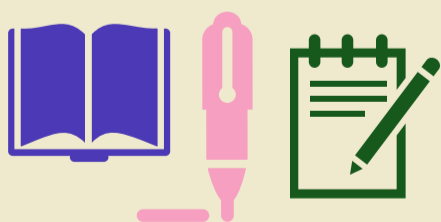
We can stop tsunamis from happening we can only do our best to get away from them. The best thing to do is evacuate and GET AWAY FROM WATER

## TSUNAMI DETECTOR

Measures that humans have made to try and detect tsunamis before they happen are called coastal tide gauges and they are located deep in the ocean. The sensors for these are located on the ocean floor and detect the wave pressure to detect the signal of a tsunami



## FACTS!!!!



**DROWNING IS THE MOST SIGNIFICANT CAUSE OF DEATH DUE TO TSUNAMIS**

There are an estimated 236,000 annual drowning deaths worldwide.

**REMEMBER EVACUATE: DO NOT WAIT! ..**