



# Tsunami



**What are  
Tsunamis?**

**How do They  
Affect  
Earths systems?**

**How do we deal  
with them?**

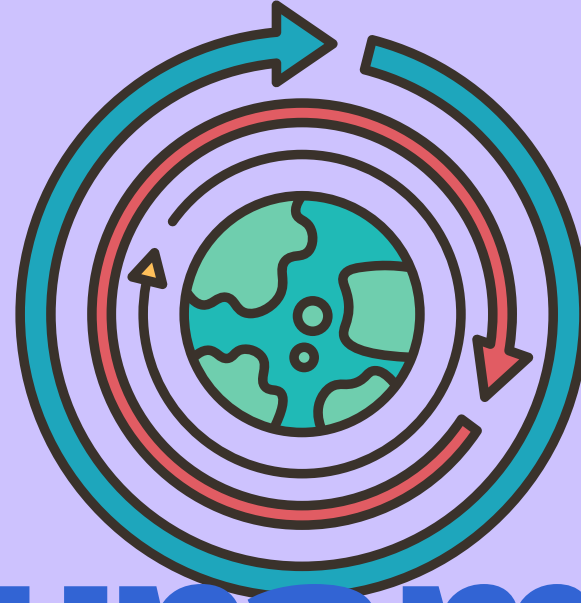


# WHAT IS A TSUNAMI AND WHAT CAUSES THEM?

**A tsunami is a series of waves caused by the displacement of a large volume of water in a body of water, typically an ocean or a large lake.**

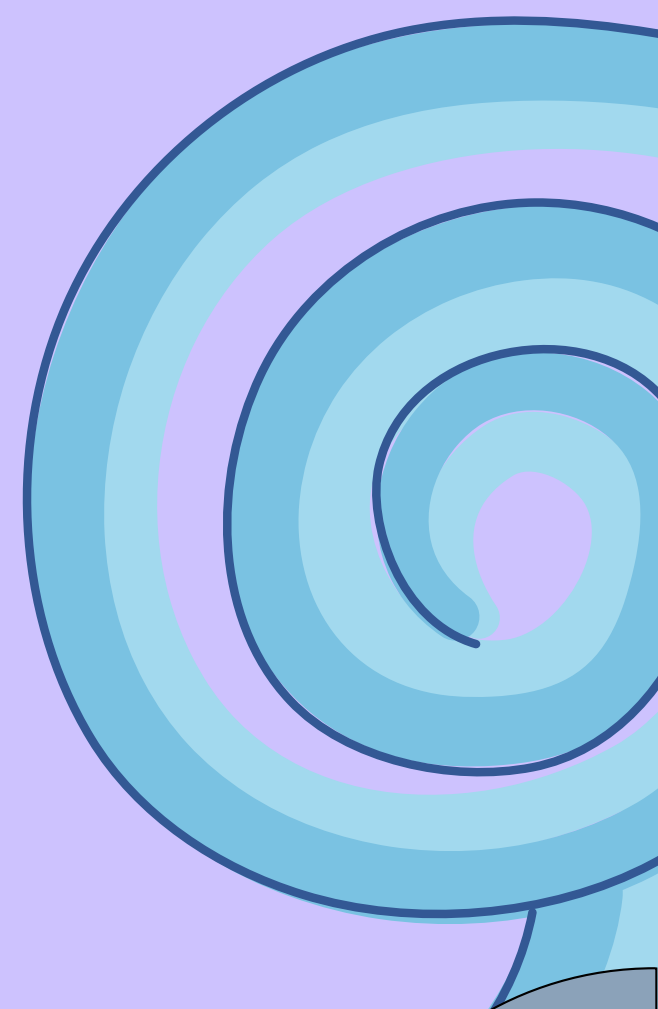
**TSUNAMIS ARE CAUSED BY EARTHQUAKES, LANDSLIDES, OR VOLCANIC ERUPTIONS NEAR OR BELOW THE OCEAN FLOOR. THEY ARE MOST COMMON IN THE PACIFIC OCEAN AND ITS ADJACENT SEAS.**





# **Affects Tsunamis Have on earths Systems**

- 1. Tsunami's can cause problems in the earth's Lithosphere/biosphere by destroying the homes of wildlife and people**
- 2. Tsunami's also cause problems in the earth's atmosphere Depending on their intensity, the earthquakes and tsunami's generated waves can cause ripples in the ionosphere.  
(Ionosphere is located 85km above the earths surface)**

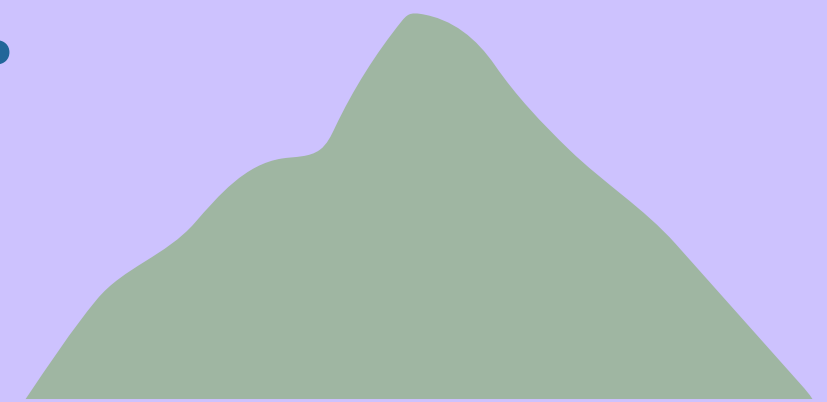


# How can you stay safe during a Tsunami?

- **Go as high and as far as you can, preferably to a location 100 feet above sea level and two miles away.**



- **Every step inland or upward makes a difference.**



- **You are too close for safety if you can see the wave.**



- **A Tsunami WARNING indicates that a tsunami has been generated and may be close to your location.**

- **A Tsunami WATCH indicates that a tsunami has not yet been confirmed but may exist and be as close as an hour away.**

